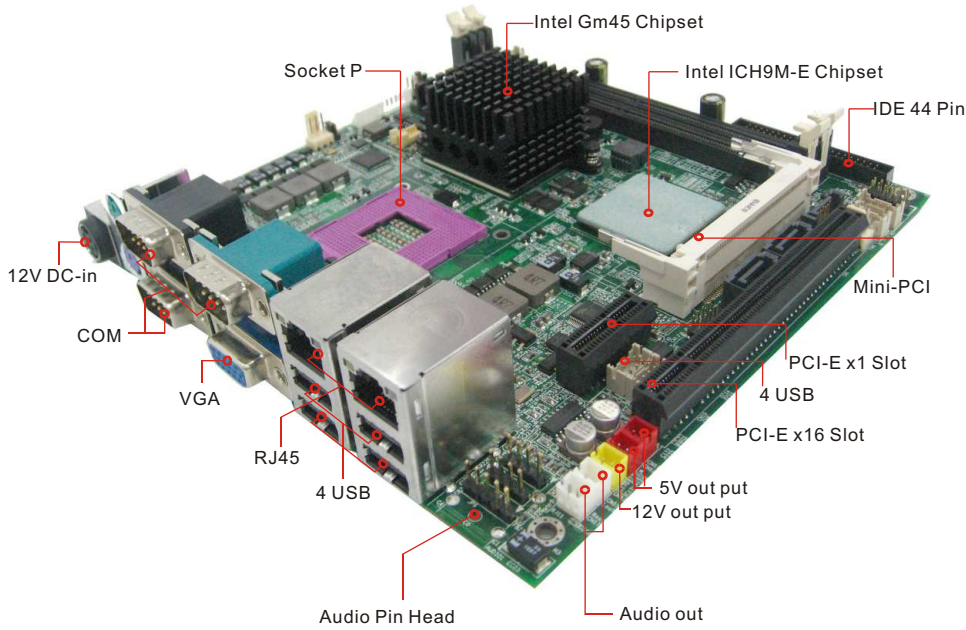
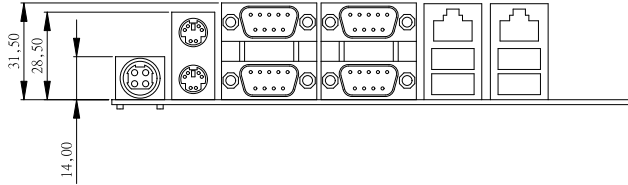


I771

Intel Core 2 Quad/Core 2 Duo/Celeron M High Performance, Mini-ITX Motherboard

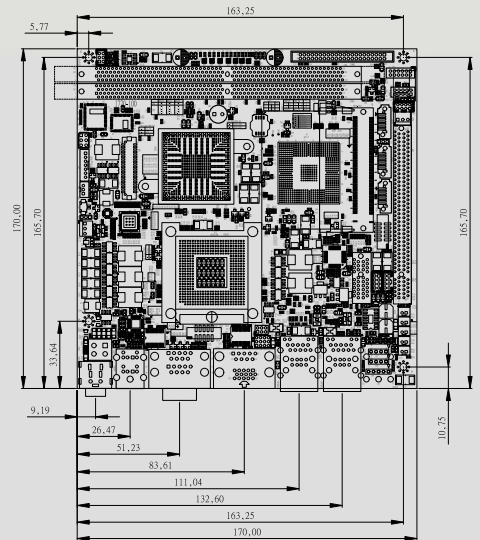


On Board I/O (Unit : mm)



Features

- Mini-ITX Form Factor (170mm X 170mm)
- Intel Core 2 Quad/Core 2 Duo/ Celeron M processors, up to 3.06GHz
- Intel GM45 / ICH9M-E Chipset
- Integrated VGA, 24bit LVDS; DVI-D and TV-out (Optional)
- Up to 384MB shared with system memory; RAID 0/1
- 2 x DDR2 DIMM, max. 4GB
- 1 x Mini PCI, 1 x PCI-E (x1), 1 x PCI-E (x16),
- 3 x SATA, 4 x COM, 8 x USB 2.0, 8 x GPIO
- 1 x TV-out (optional)
- RAID 0/1/5



Specification

System Specification

Processor	: Socket P for Intel Core 2 Quad / Core 2 Duo /Celeron M , up to 3.06 GHz
BIOS	: AMI 4Mbit SPI FLASH
System Chipset	: Intel GM45 / ICH9M-E Chipset
System Memory	: 2 x DDR2 DIMM, Max 4GB
SSD Interface	: N/A
Expansion Slot	: 1 x Mini PCI, 1 x PCI-E(x1), 1 x PCI-E(x16)

I/O Connectors

Back Panel I/O Port	: 2 x RJ-45(Gigabit Ethernet), 2 xPS/2, 2 xRS-232 Conn, 1 x RS-232/422/485, 1 x VGAConn, 4 xUSB, 1 xDC-IN Power Jack
Internal I/O pin-header	: 1 x RS-232, 4 x USB, 1 x 44pin IDE, 3 xSATAConn, 8 xGPIO, 1 x Micin/Line in/Line Out

Display Specification

Graphic Controller	: Intel GMA 4500 MHD
Graphic Memory	: Shared memory Max384 MB
LVDS	: Dual Channel 24bit LVDS

Audio Specification

Audio Controller	: VIA VT1708ACodec
Audio Interface	: Microphone in, Line in, Line out

Ethernet Specification

LAN Controller	: 2x RJ-45 10/100/1000Hbps LAN
----------------	--------------------------------

Mechanical and Environment

Dimensions (L x W)	: 170 mm x 170 mm (Mini-ITX Form Factor)
Power Requirement	: +12V / 5A
Power Input	: DC IN 12V(Power Jack)
Operating Temperature	: 0 deg.C to 60 deg.C
Operating Humidity	: 30% to 90% (non condensing)
Certifications	: CE, FCC, RoHS

Rev.	Reasons	Revised Date
1.0	New Add	Jan-19-09
1.1	Spec Change	Mar-05-09