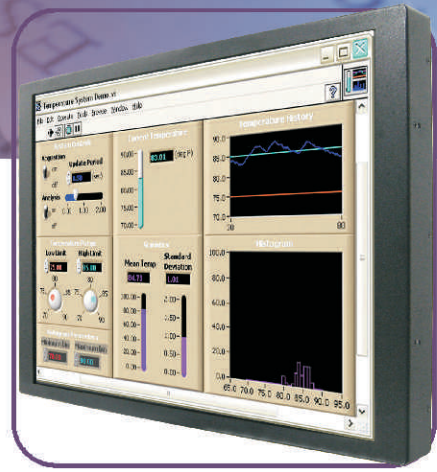


Chassis Monitor

Chassis Monitor



20"

Specifications

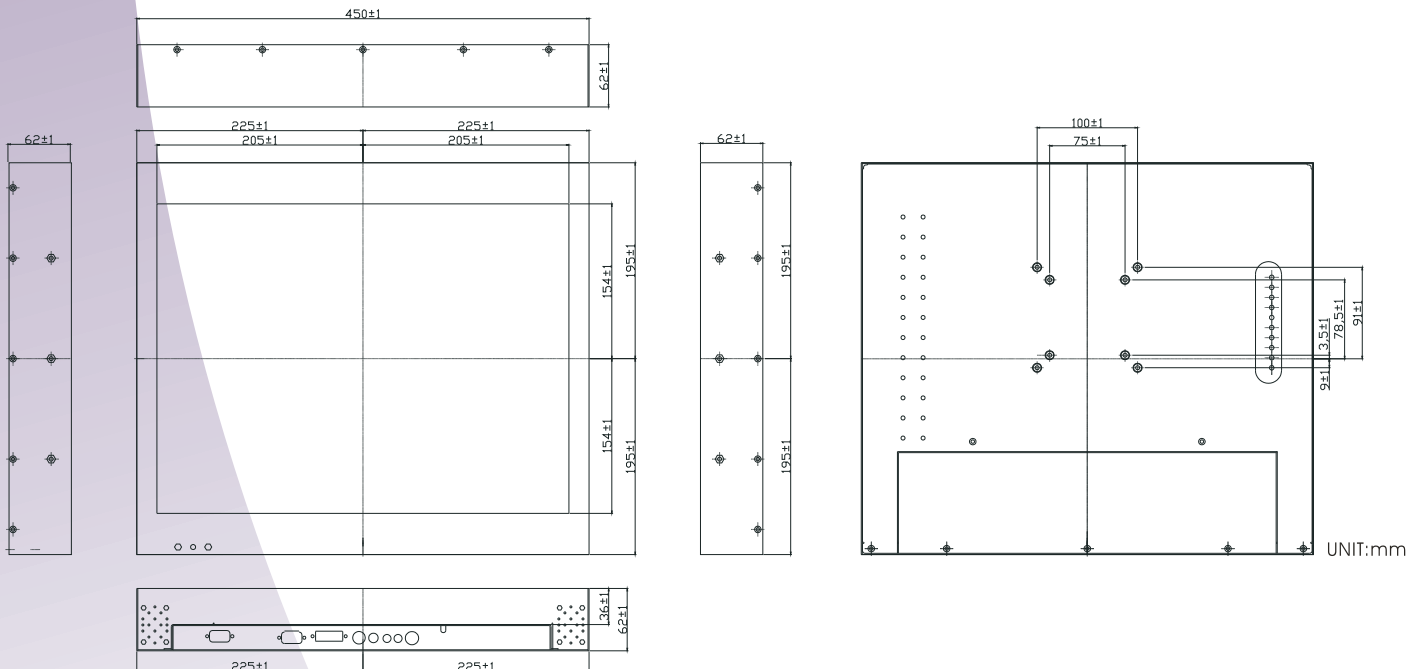
**RoHS
COMPLIANT
2002/95/EC**

Model Name	R20L100-CHA2
Viewable Size Image	20.1"
Active Display Area(mm)	408(H)x306(V)
Pixel Pitch(mm)	0.255(H)x0.255(V)
Number of Pixels	1600x1200
Contrast Ratio	800:1(typ.)
Display Color	16.7M(8bit/colors)
Brightness(cd/m ²)	300(typ.)
Viewing Angle(CR>=10)	-89~89(H);-89~89(V)
Synchronization Range	
Horizontal/Vertical	31.5~80.0KHz/60~75Hz
Recommended Resolution	1600x1200@ 60Hz
Signal Connector	15 pin D-Sub
Power Source	12V DC in, with External AC to DC Adapter(100~240V AC)
Power Consumption	60W typical, normal operation
Power Management	VESA DPMS Compliant
Plug & Play	VESA DDC 1/2B
Optional Video Input	S-Video, Composite
Optional DVI Input	Yes
Optional Touch Screen	SAW,Resistive

Remarks:R20L100series= VGA Input only

R20L110 series= VGA+Video Input

Mechanical Drawing



* Note: this is a simplified drawing and some components are not marked in detail. Please contact our sales representative if you need further product information.

Rev.	Reasons	Revised Date
1.3	Pic change	Aug-15-13