

# ARES-1973C-48C8

Dual 10G SFP+ Fiber LAN with 6<sup>th</sup> / 7<sup>th</sup> Gen. Intel® Core™ i7/i5/i3 Processor



## Features

- Socket LGA1151 for Intel®Core™ i7/i5/i3 Processor
- 1 x GbE + 2 x SFP+ LANs Connectivity
- 2 x SFP+ 10G LANs for 10G Cameras
- Fanless Design
- 4 x USB 3.0/2.0 combo + 4 x USB 2.0 ports
- Supports dual-display for 1 x VGA and 1 x DisplayPort
- Internal USB 2.0 Type-A Connector for USB Dongle
- Supports RAID 0 / 1

System	
CPU	Socket LGA1151 for 6 <sup>th</sup> / 7 <sup>th</sup> Intel® Core i7 / i5 / i3 Max.35W TDP
Memory	2 x 260-pin DDR4 SO-DIMM sockets, supporting 2133MHz SDRAM up to 32GB
Chipset	Intel® C236
Graphics	Intel® Gen9 Graphics DX 11/12, OGL4.3/4.4
LAN Chipset	1 x Intel® i219LM PCIe controller w/ iAMT 11.0 (except Core i3) 1 x Intel® X710-BM2 PCIe controller
Watchdog Timer	1~255 levels reset
I/O	
Serial Port	2 x RS232/422/485 DB-9 ports
	2 x RS232 ports DB-9 ports
USB Port	4 x USB 3.0/2.0 Type A connectors
	4 x USB 2.0 Type A connectors
	1 x Vertical USB 2.0 (type A) internal
LAN	1 x RJ-45 port for Giga LAN
	2 x SFP+ port for 10 GbE LAN
Video Port	1 x DisplayPort 1.2, up to 4K (UHD)
	1 x VGA
Storage	1 x SATA 3.0 Port and 1 x SATA Power connector
	1 x M.2 M-key for SSD, 2242/2280 (PCIe x4+SATA3.0)
Digital I/O	8 bit DIO (Optional 32 bit DIO)
Expansion Bus	1 x M.2 M-key for SSD, 2242/2280 (PCIe x4+SATA3.0)
Environmental	
Operating Temp.	-20 ~ 50 °C (-4 ~ 122°F), ambient w/ air flow

Storage Temp.	-30 ~ 80°C (-22 ~ 176°F)
Operating Humidity	10-95% @ 50°C (non-condensing)
Vibration	5~500Hz 3 Grms X,Y,Z axis w/SSD, according to IEC 68-2-64
	10G peak acceleration (11 m sec. duration), operation
Shock & Crash	30G peak acceleration (11 m sec. duration), nonoperation
	According to IEC 68-2-27

## Qualification

Certification	CE, FCC Class A
---------------	-----------------

## Power Requirement

Power Input	DC 12~24V
Power Consumption	Max. 80W (w/o I/O card)

## Storage

Type	1 x 2.5" internal drive bay for HDD/SDD
	1 x M.2 M-key for SSD, 2242/2280

## Mechanical

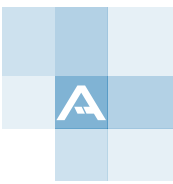
Construction	Metal + Aluminum Alloy
Mounting	Wall-mount / DIN-rail
Weight	4.2Kg
Dimensions (W x D x H)	254 x 170 x 94 mm (10" x 6.7" x 3.7")

## OS Support

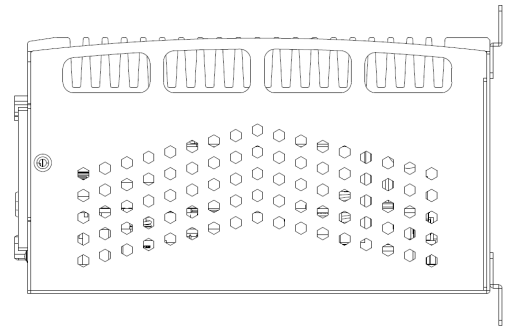
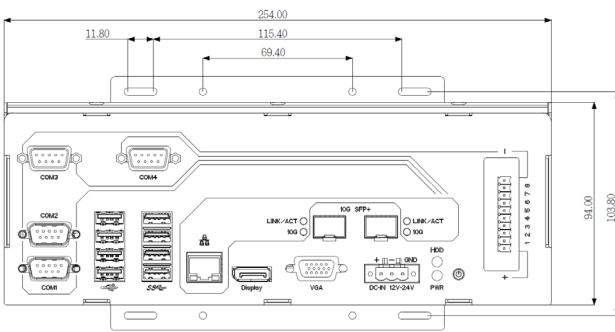
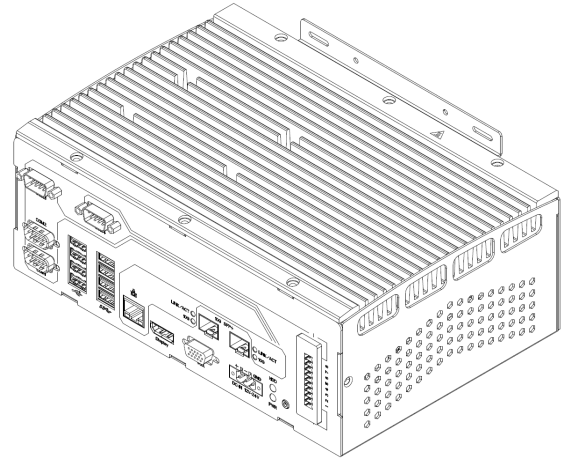
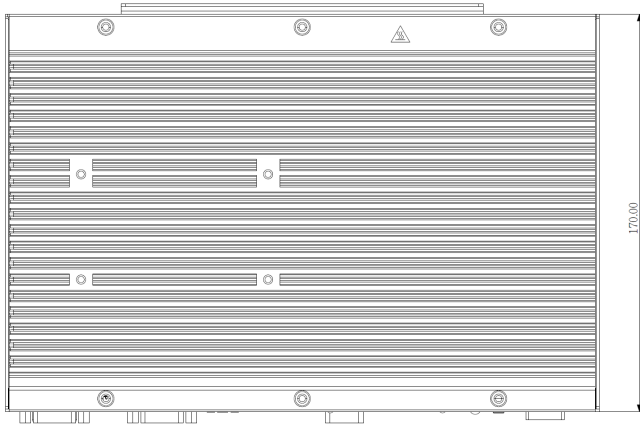
Windows 10 IoT

## Ordering Information

ARES-1973C-48C8	ARES-1973 w/ C236, 4 x COM, 4 x DI/DO, 1 x GbE LAN, 2 x 10GbE LAN, and 8 x USB
-----------------	--



# Dimensions



## Standard Accessories

WMK-1973      Wall-mount kit for ARES-1973



## Optional Accessories

64/128/256GB SSD      2.5" SSD MLC 64/128/256GB Kit



MM-4C-4G/8G/16G      DDR4-2133 4GB/8GB/16GB SDRAM Kit



Core™ i7-7700T      Intel® 7<sup>th</sup> Gen. Core™ i7-7700T processor, L2/8M, 2.9G

Core™ i5-7500T      Intel® 7<sup>th</sup> Gen. Core™ i5-7500T processor, L2/6M, 2.7G

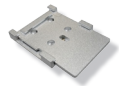


Core™ i3-7101TE      Intel® 7<sup>th</sup> Gen. Core™ i3-7101TE processor, L2/3M, 3.4G

PAC-120W6B-FSP-ES      19V/6.32A 120W AC/DC adapter kit



DRK-002      AI6063  
DIN Rail 84 x 60 x 9mm



SFP+-10G-F      10GBASE-SR/SW,MM,850nm,VCSEL,SFP+ FIBER TRANSCEIVER

